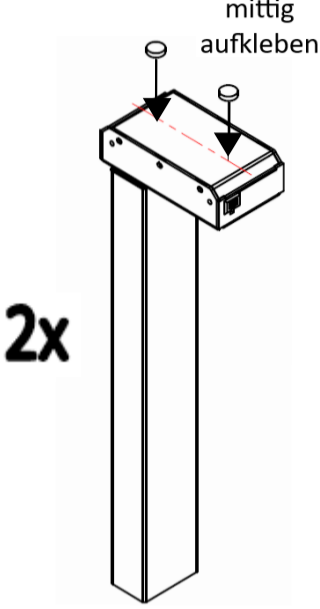
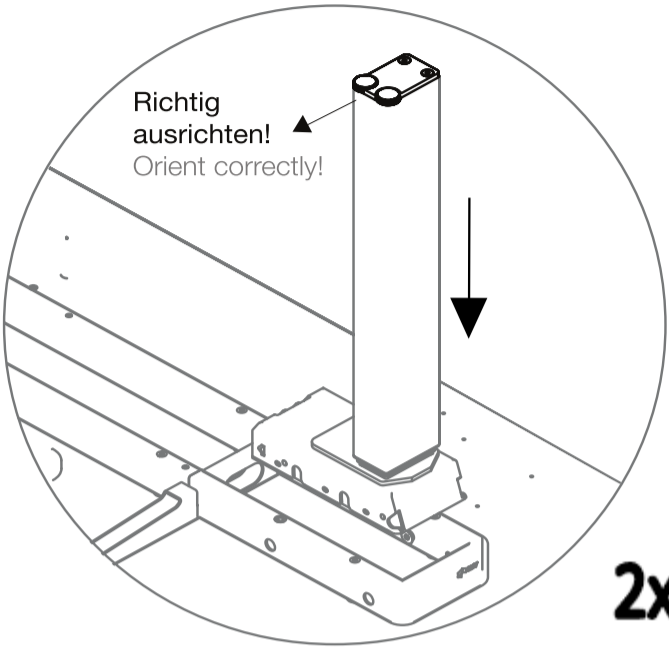

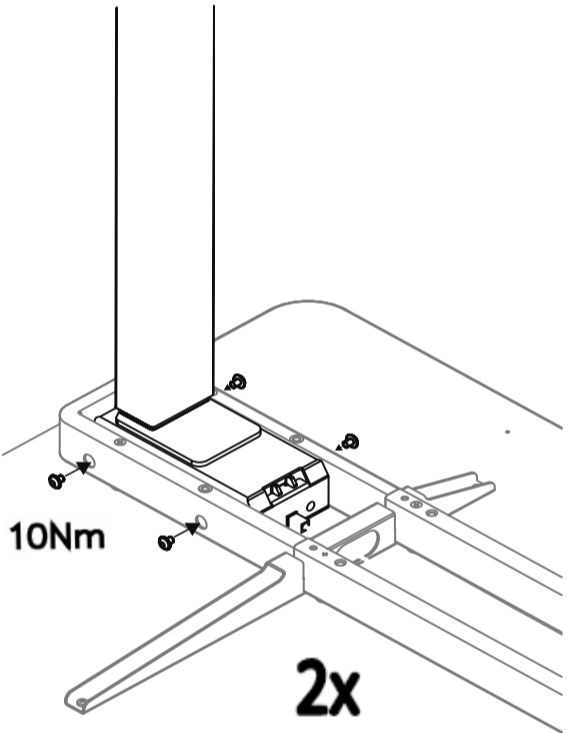
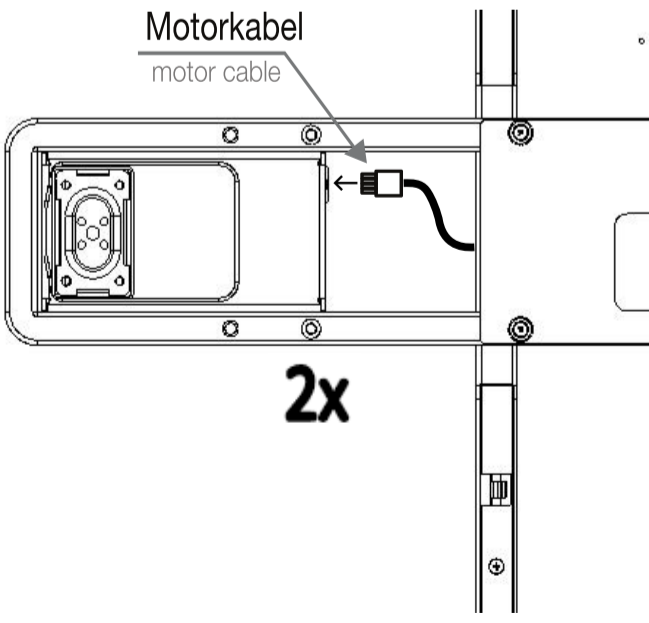
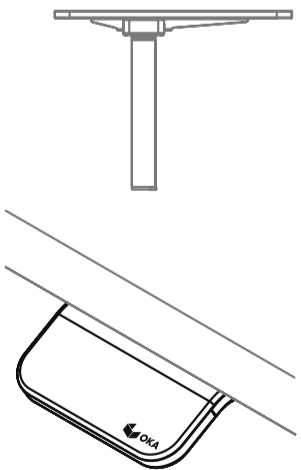


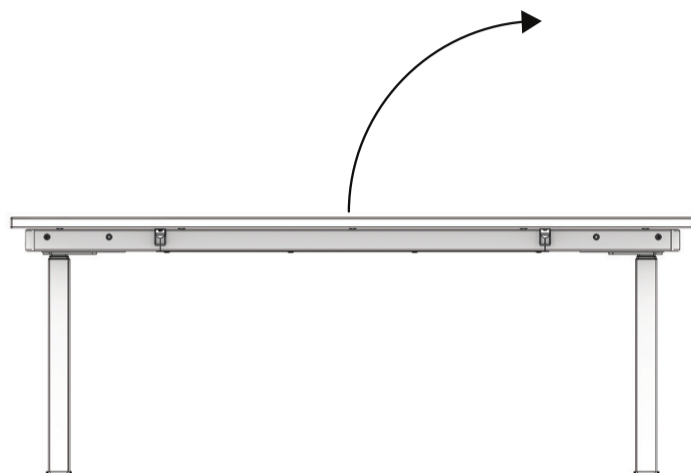
1 Säulen und Verkabelung Columns and cabling

<p>1 Beschlagselemente Filz - Abstandshalter</p> <p>mittig aufkleben</p>  <p>2x</p>	<p>2</p>  <p>Richtig ausrichten! Orient correctly!</p> <p>2x</p>
<p>3 Beschlagselemente Fitting elements</p> <p>LS  M6x10</p>  <p>10Nm</p> <p>2x</p>	
<p>4</p> <p>Motorkabel motor cable</p>  <p>2x</p>	<p>5</p>  <p>Nach UNTEN drücken, bis der Tisch leicht nach unten fährt, dann wieder nach oben. Press DOWN until Table moves down slightly, then up again.</p>

2 Montage – Verbindungstraverse Assembly – connecting crossbar

1 Tische stirnseitig nebeneinander stellen
Place tables end-to-end next to each other

2x



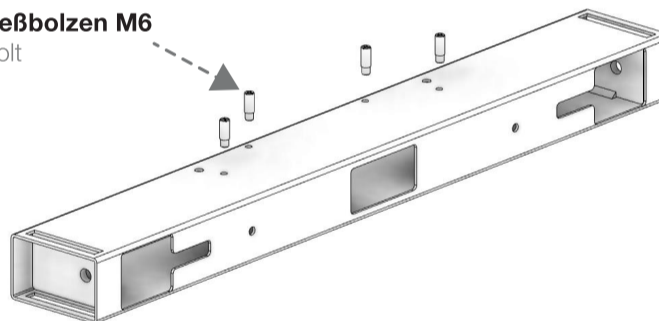
2 Schließbolzen M6 einschrauben
Screw in M6 bolt

2x

Werkzeug
Tools

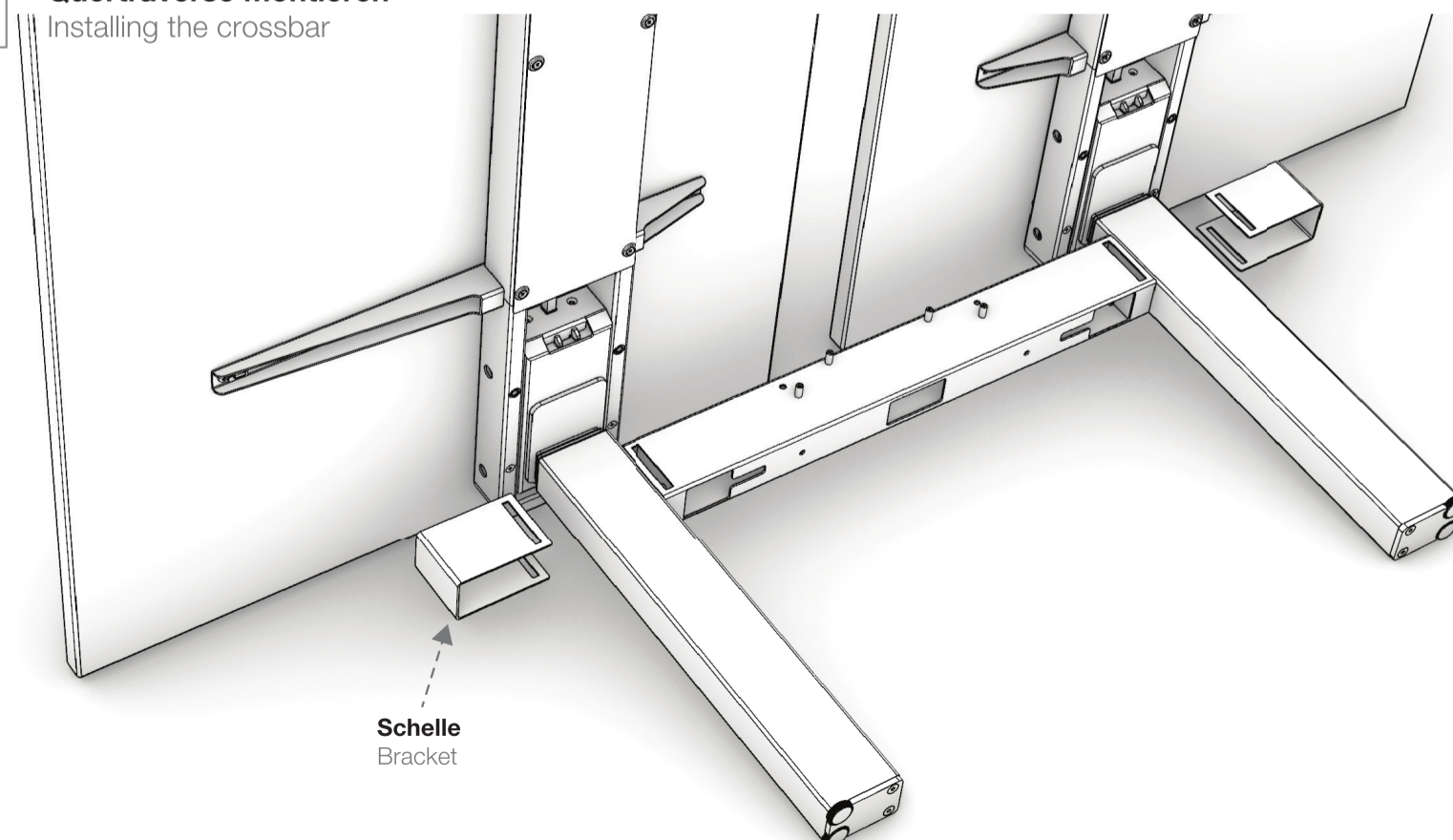


Schließbolzen M6
M6 bolt

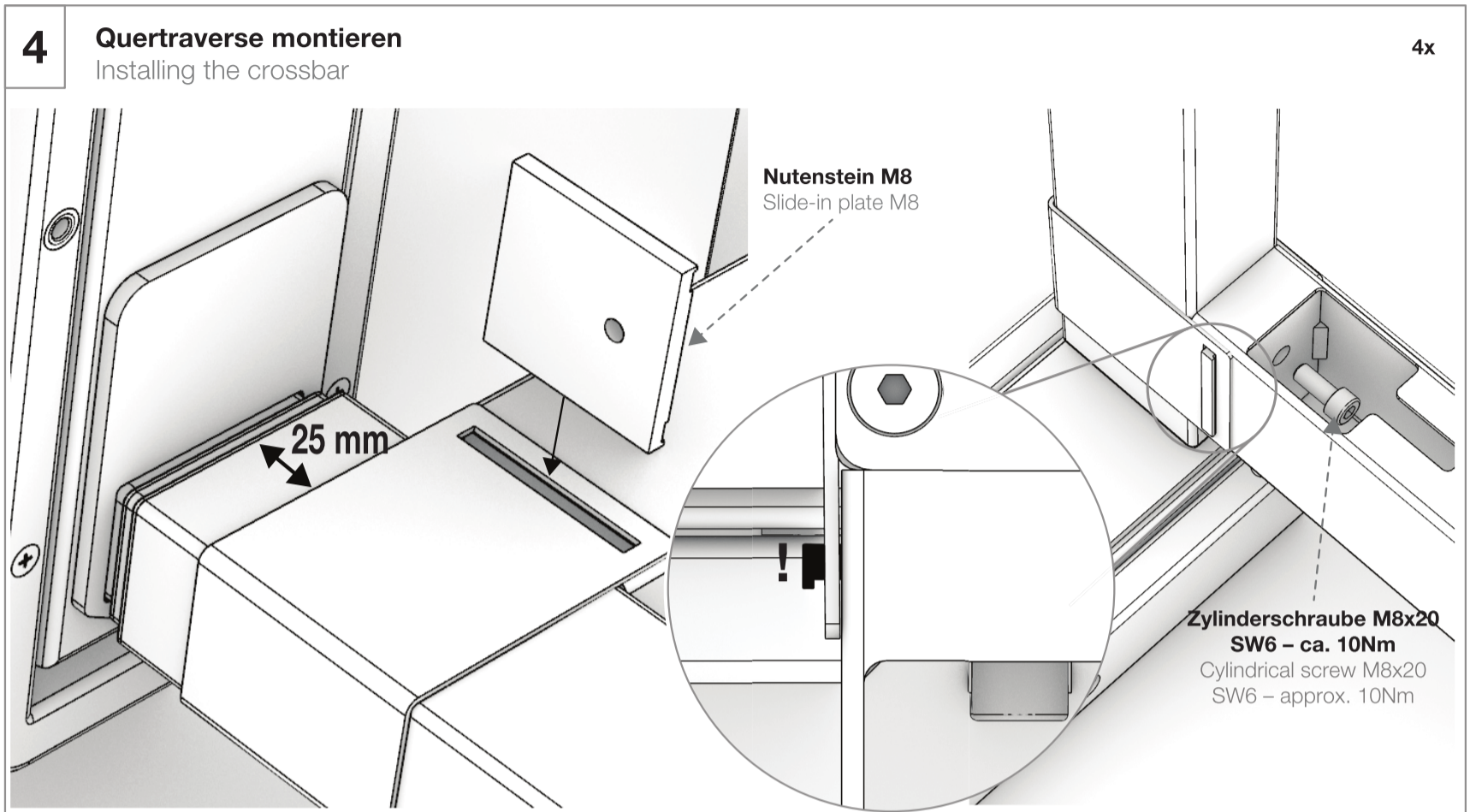


3 Quertraverse montieren
Installing the crossbar

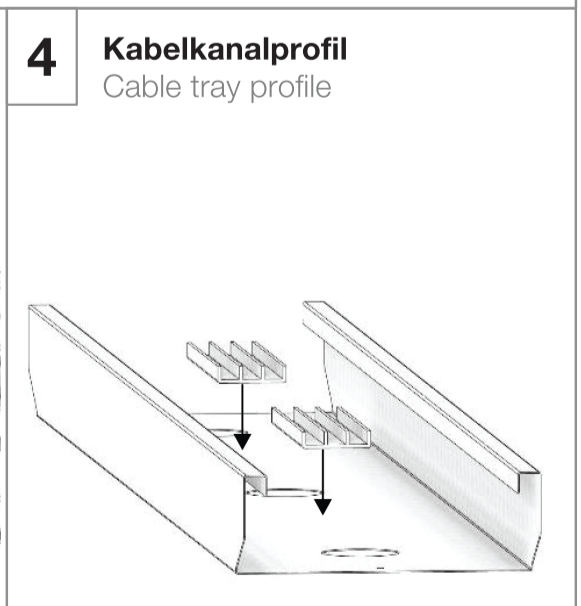
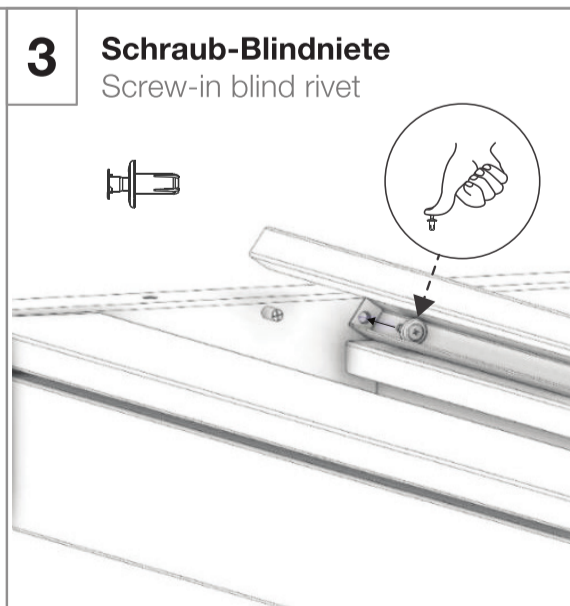
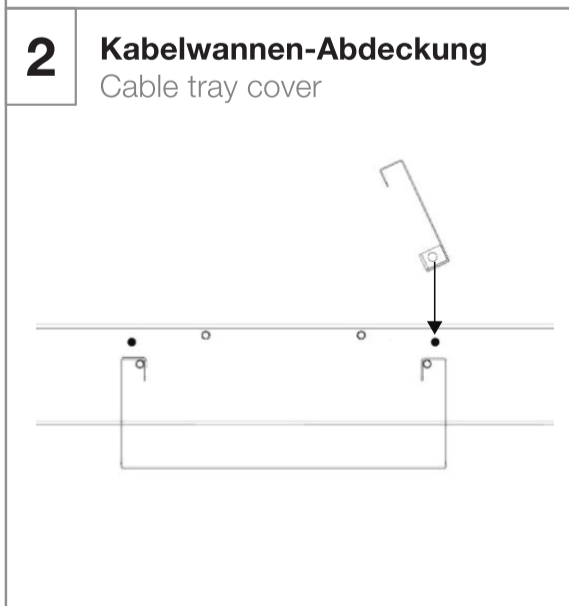
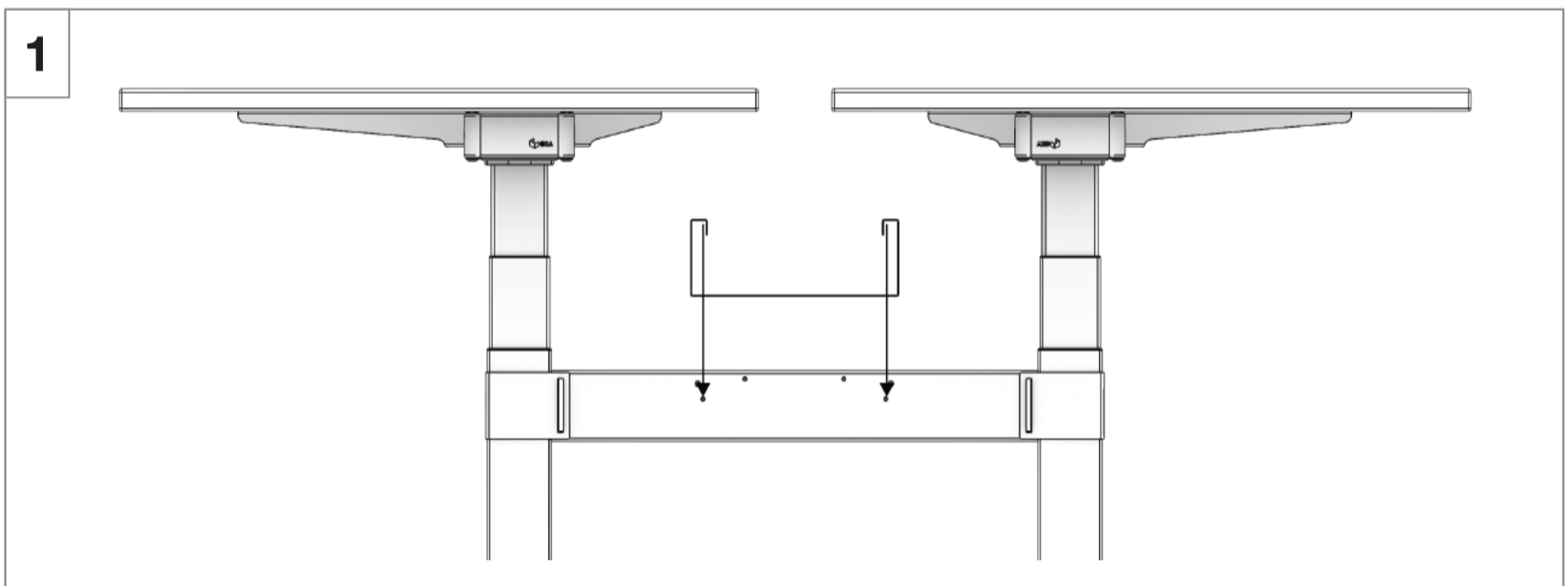
2x



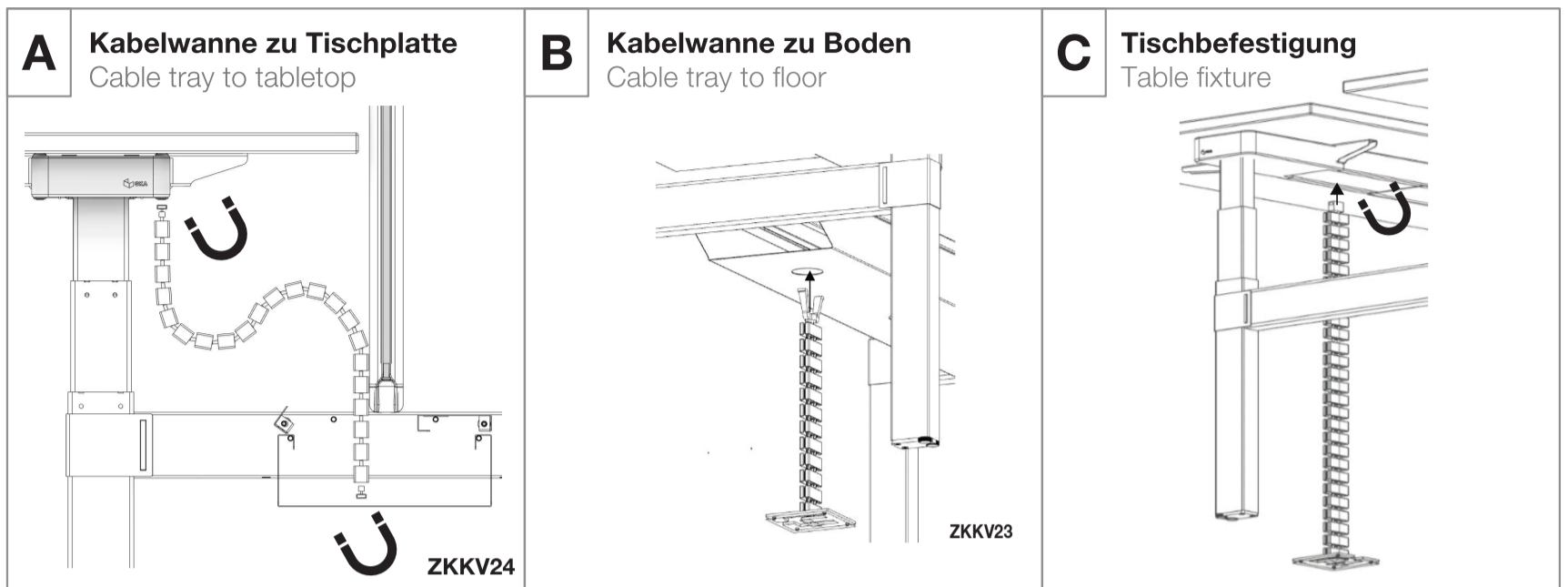
2 Montage – Verbindungstraverse Assembly – connecting crossbar



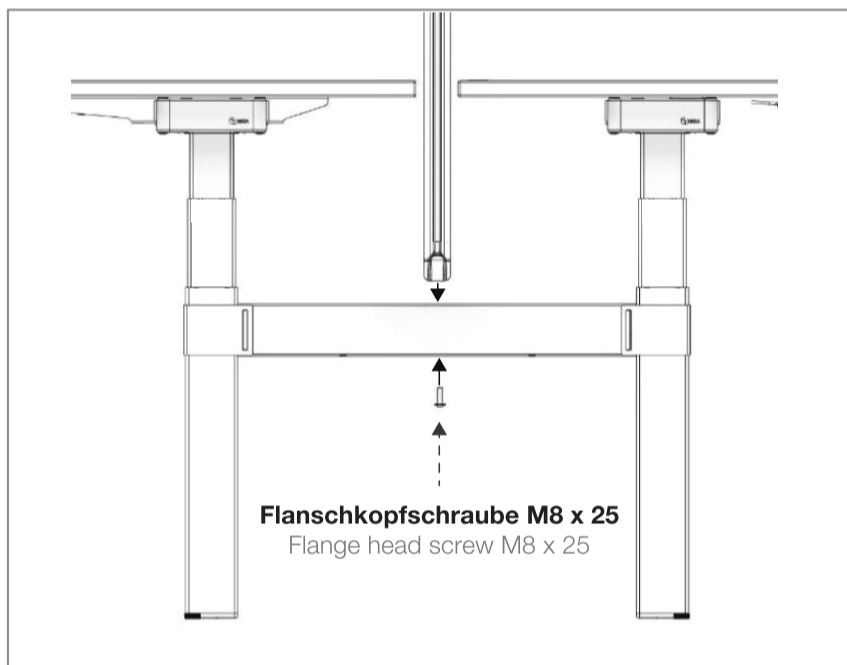
3 Montage – Kabelwanne Assembly – cable tray



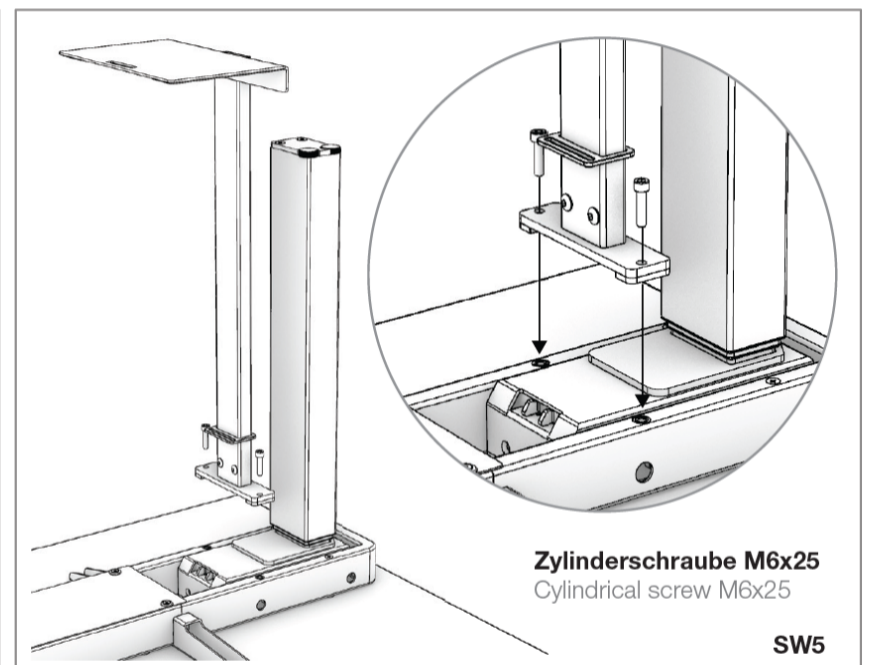
4 Montage – Kabelschlange Cube



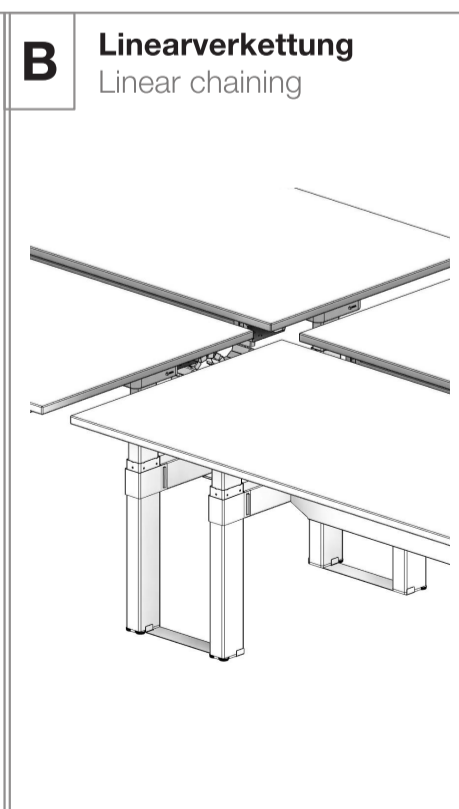
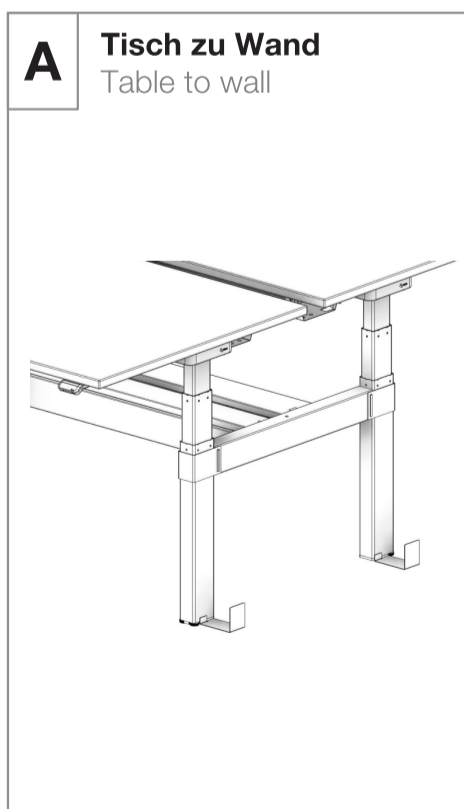
5 Montage – Screen Assembly – Screen



6 Montage – CPU-Halter Assembly – CPU holder



6 Abstandhalter Distance holder



7 Kabelbrücke Cable bridge

